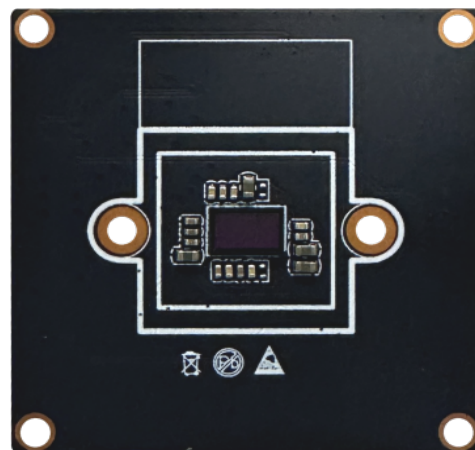
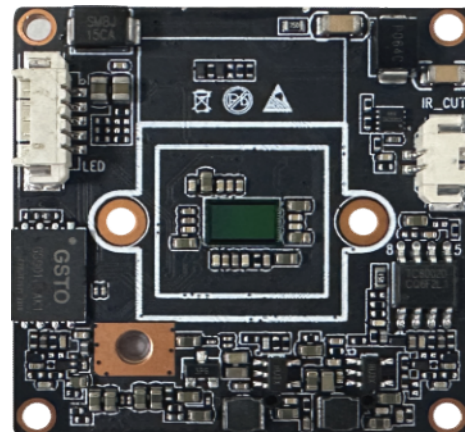




D44-10

Features:

- Dual 1/3 inch Progressive Scan CMOS
- H.265+, H.265, H.264+, H.264 Video Compression
- Supports backlight compensation, strong light suppression, 3D digital noise reduction
- Flip, Mirror, and Rotation with 90 or 270 degree
- Good night-time performance with Smart Supplement Light
- Support Wi-Fi 6
- Line crossing, intrusion, region entrance, region exiting
- Alarm triggering by human and vehicle
- Supports voice intercom, voice broadcast, custom voice
- Support 34 languages on the browser
- Browser plugin-free: supports Edge, Chrome, Safari, Firefox and other mainstream browsers
- Supports image masking to protect private areas.
- Support ONVIF, can be connected to third-party NVR
- Support Mesh CMS functionality on the browser



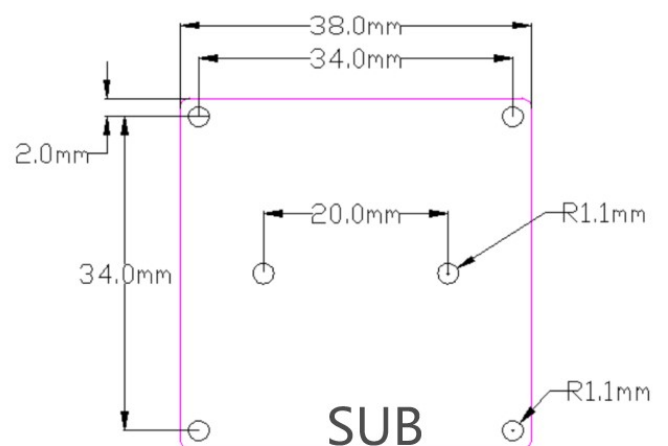
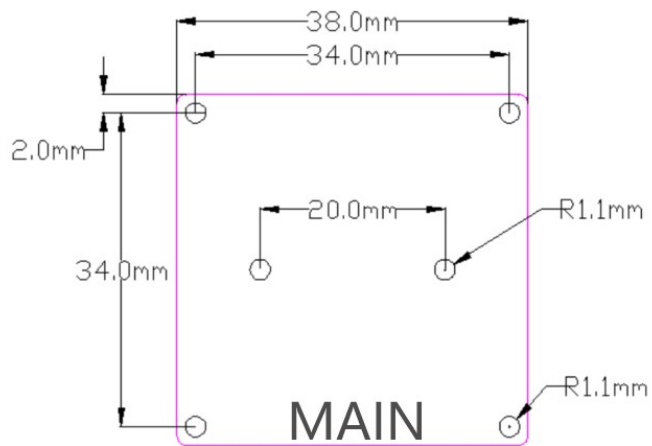
Product model	D44-10
SOC processor	SSC37X, built-in 1T computing power
Image Sensor	Dual 4M, 1/3" Progressive Scan CMOS
Video main Sensor sub-Sensor	Main Stream 30FPS (2560*1440, 2304*1296, 1920*1080, 1280*720)
	Sub-Stream 30FPS (640*360, 352*240)
	Image effects: Automatic white balance, support for digital wide dynamic range, support for backlight compensation, adjustable brightness, contrast, and chroma parameters.



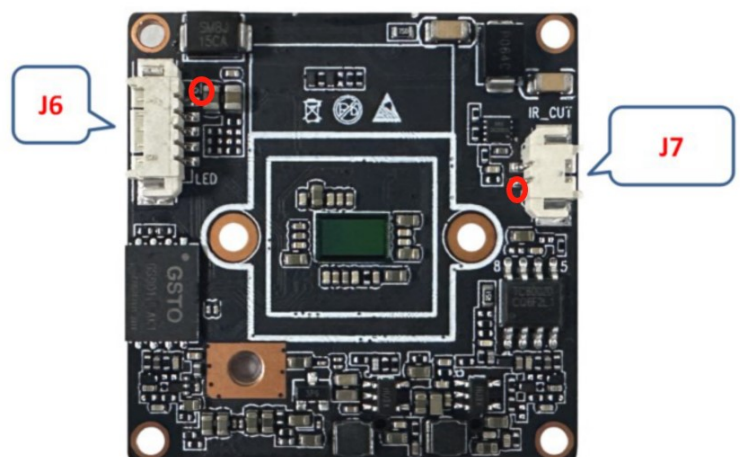
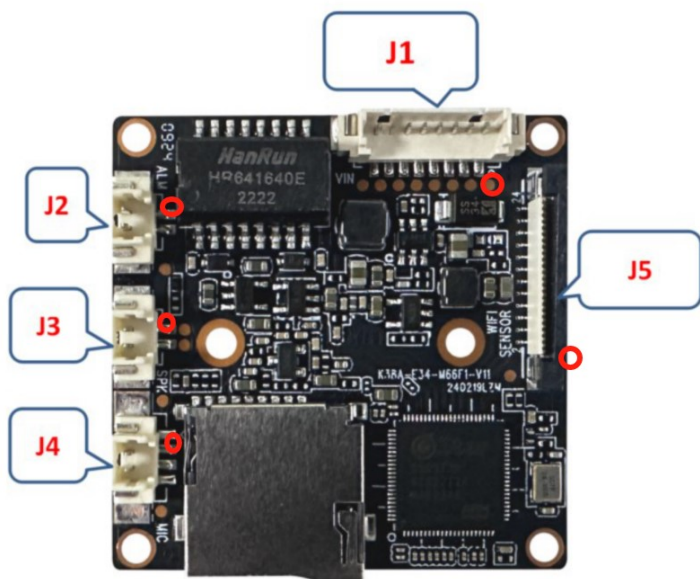
Network	1 RJ45 10 M/100 M self-adaptive Ethernet port
	Protocols:TCP/UDP/IP/HTTP/RTSP/DHCP/P2P/ONVIF
WIFI	IEEE802.11b/g/n/ax 2.4G
Smart Supplement Light	Infrared/white light control by electrical level or PWM
	Adjustable brightness depend on Sensor or photoresistor
TF	Yes
Reset Key	Yes
Network indicator light	Yes
Emc	GB/T17626.5, IEC61000-4-5
Intelligent applications	Face Capture: Enables configurable detection zones. When a face is detected within the designated area, an alarm is triggered based on predefined conditions.
	Face Recognition: Employs a local face database for recognition with a precision rate exceeding 99.9%.
	Pet Monitoring: detect and track pets, specifically cats and dogs.
	Traffic Surveillance: Detects vehicle congestion and provides traffic statistics.
	License Plate Recognition: Identifies and recognizes common license plates with an accuracy rate surpassing 99.8%.
	Infant Monitoring: Provides real-time monitoring of a baby's cries with event reporting.
	Noise Detection: Monitors high-decibel barking sounds in real-time and generates event reports.
	Obstruction Detection: Detects obstructions in specified areas of the image and reports obstruction events based on trigger conditions.
	Perimeter Security: Alerts upon human or vehicle intrusion into designated alarm zones.
	Boundary Crossing Detection: Identifies human movement with directional detection capabilities (A->B, B->A, and A<->B).
Power	Absentee Detection: Triggers alarms when personnel leave designated areas for a defined period, automatically ceasing upon their return.
	People Counting: Counts individuals entering and exiting, displaying real-time overlays on the image, and providing daily data.
	Voice Alerting: Links with voice broadcasting systems, allowing customizable recorded messages for alerts.
Operating Conditions	-30℃~65℃
Dimension	Dual 38*38mm



Board



Main board



Note: The circle points to pin 1



Interface Description:

J1 (SMT-8P-1.25MM-V) -----Power and ETH

Pin	Name	Function
1	12V_VIN	12 VDC IN
2	GND	GND
3	RX-	Receive Data- 6
4	RX+	Receive Data+ 3
5	TX-	Tranceive Date- 2
6	TX+	Tranceive Date+ 1
7	LED_LINK	Network indicator light
8	RST	Factory recovery

J2 (SMT-2P-1.25MM-V) -----Alarm

Pin	Name	Function
1	GND	GND
2	ALARM_IN	Alarm output,active high

J3 (SMT-2P-1.25MM-V) ----Speaker

Pin	Name	Function
1	SPK+	Speaker+(8 Ω 1W)
2	SPK-	Speaker- (8 Ω 1W)

J4 (SMT-2P-1.25MM-V) ----MIC

Pin	Name	Function
1	MIC0	Line in
2	GND	GND

J5 (SMT-2*12P-0.5MM-FPC) ----Panoramic and Wi-Fi

J6 (SMT-5P-1.25MM-H) ----Supplement Light

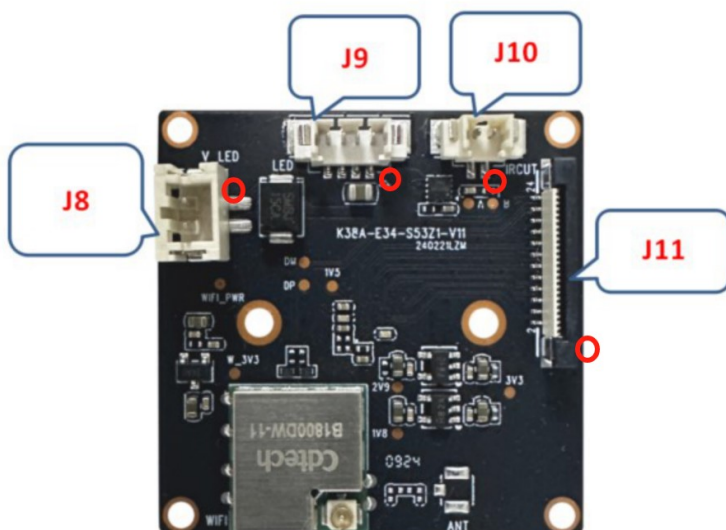
Pin	Name	Function
1	12V_L	12 VDC Output for Supplement Light
2	GND	GND
3	IR_CTRL	Infrared light enable,active high,usable PWM
4	WL_CTRL	White light enable,active high,usable PWM
5	ADC_DET	Photoresistor for ambient brightness detection

J7 (SMT-2P-1.25MM-H) ----IRCUT1

Pin	Name	Function
1	IRCUT1+	IRCUT1+
2	IRCUT1-	IRCUT1-



Sub-board



Note: The circle points to pin 1

J8 (SMT-2P-2.0MM-V) ----Supplement light power

Pin	Name	Function
1	12V	12 VDC input for Supplement Light
2	GND	GND

J9 (SMT-4P-1.25MM-V) ----Supplement light for the second sensor

Pin	Name	Function
1	VLED	12 VDC Output for Supplement Light
2	GND	GND
3	IR_CTRL	Infrared light enable, active high, usable PWM, same as J6.3
4	WL_CTRL	White light enable, active high, usable PWM, same as J6.4

J10 (SMT-2P-1.25MM-V) ----IRCUT2

Pin	Name	Function
1	IRCUT2+	IRCUT2+
2	IRCUT2-	IRCUT2-